

REPAIR PART INSTALLATION INSTRUCTIONS

37319801821 BOOSTER ASSEMBLY

FOR USE WITH MODELS: DGAA & DGAH

GENERAL INFORMATION

IMPORTANT - These instructions are intended for the use of qualified individuals specially trained and experienced in installation of this type of equipment and related system components.

Installation and service personnel are required by some states to be licensed.

Persons not qualified shall not install this equipment or interpret these instructions.

WARNING

Shut off electrical supply to furnace at household breaker box to prevent electrical shock, severe personal injury, or death.

1. Turn off gas to the furnace at the supply line gas cock and the furnace gas valve.
2. Set the thermostat to the lowest temperature setting.
3. Turn system switch off.

BOOSTER REPLACEMENT INSTRUCTIONS

1. Unplug pressure switch hoses and electrical connections from the booster assembly.
2. Remove the nine (9) screws from outer flange of the combustion air box.
3. With the screws removed, the combustion air box, booster assembly, and combustion air tube are free to move down approximately 1" to allow for disengagement.
4. Remove combustion air tube to provide clearance for booster removal and replacement.
5. Reinstall combustion air tube.

6. Reinstall combustion air box with the (9) nine screws previously removed.
7. Reconnect pressure switch hoses and electrical connections to the booster assembly.
8. Restore electrical power and gas to the furnace.

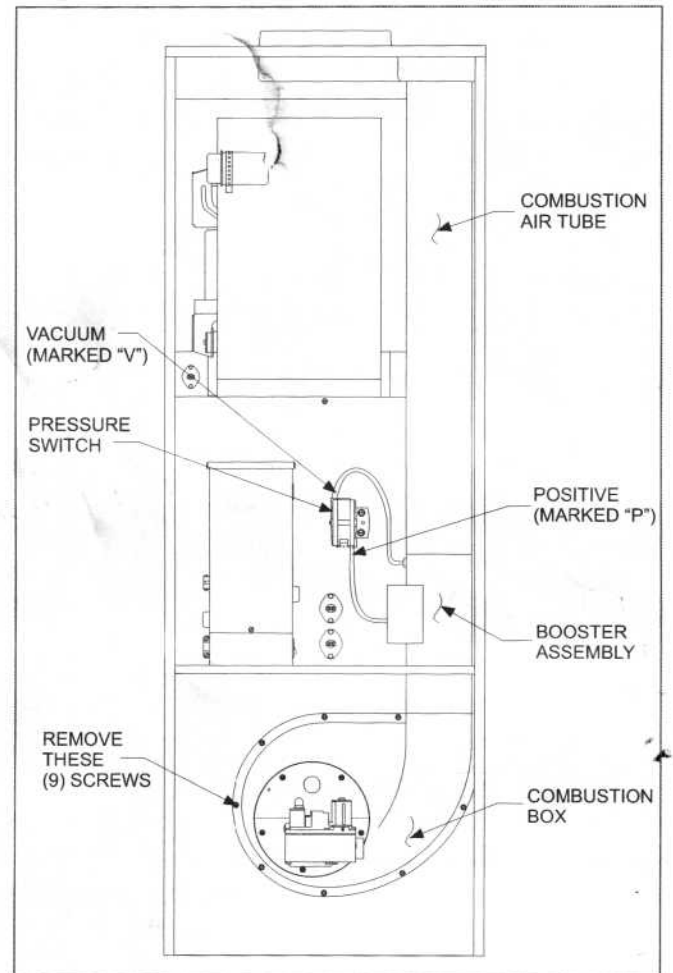


FIGURE 1